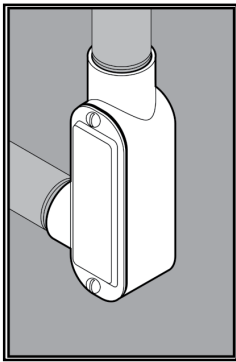
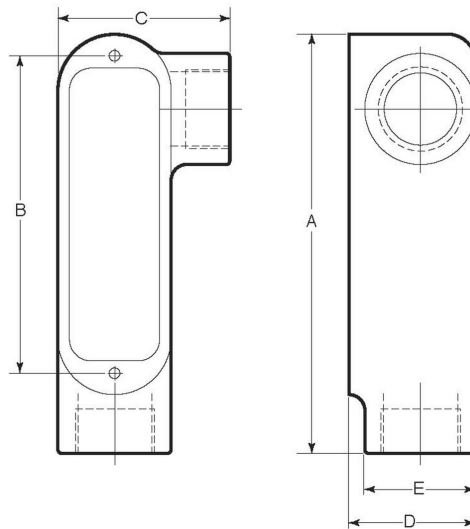


STAINLESS STEEL LL CONDUIT BODIES



APPLICATION

- Designed to make 90° turns, change the route of conduit, and/or to make wiring pulls and connections
- Flat back design provides extra wiring capacity
- Form 8
- Offered in seven configurations: C, LB, LL, LR, T, TB, X
- Supplied complete with cover, gasket and Type 316 SS screws
- Manufactured in stainless steel to help prevent corrosion
- Can be installed using ordinary hand tools and require little maintenance or repair
- Provided in a bright, polished finish that does not require touch up or painting



PRODUCT DETAILS

Material:

- Body: CF8M (316 SS)
- Cover, Screws: 316 SS
- Gasket: Neoprene

Country of Origin:

100% Made in USA

UL File Number:

QCIT.E300676
(Standard 514A)

Canada UL File Number:

DWTT7.E300676
(Standard 514A)

Part Number	Size	Weight/ Each (lbs.)	Dimension (in.)				
			A	B	C	D	E
7050LL	½ in.	1	5.06	3.50	2.27	1.38	1.18
7075LL	¾ in.	2	5.83	4.31	2.55	1.63	1.50
7100LL	1 in.	3	6.81	5.00	2.91	2.00	1.75
7150LL	1-½ in.	4	8.40	6.58	3.53	2.73	2.15
7200LL	2 in.	7	10.55	8.50	4.22	3.36	2.73

